



FOUNDATION FOR RURAL CHANGE: (FRC)

ANNUAL PLAN: 2021-22



Protecting Plant



Community Empowerment



Inspiring Youth

Get in Touch

Regd. Office - 93/648, Kolathia, Aiginia,
PS- Bharatpur, Dist- Khordha, Odisha, India-751019
Liason Office-Plot No.-4613/7, Near Damana High
school, Chandrasekharapur, BBSR-751016
Mob- 7326842390, 9437697146
Email- jdakua63@gmail.com,
jitendrasundaray@gmail.com

ABOUT US.....

Foundation for Rural Change (FRC) is a social development organization registered under Trust Act bearing Registration No- 1132000143/2020. The development professions founded FRC with the intention of enhancing the lives of underprivileged and marginalised individuals who have been shut out of the mainstream services. FRC has been operating for two years; its initial period we providing humanitarian aid to houses impacted by Covid as well as raising awareness of the situation. FRC has become a favoured partner with local communities and people that have experienced disaster.

Vision

Create an Ecosystem of Positive Transformation



Mission

To improve the quality of life of the most vulnerable people and communities by increasing their **CAPACITY** to produce goods and services **MORE** through Innovative Approach, **DIGITAL TECHNOLOGY**, wisely utilizing existing **NATURAL RESOURCES** and providing **BEST ALTERNATIVE CHOICES**



Core Value

- **EQUALITY:** Every member of the team is equally important and respected.
- **COLLECTIVE DECISION MAKING:** We encourage free exchange of ideas, giving voice to the concerns of all the groups and making everyone accountable to each other.
- **DECENTRALIZATION:** Decentralization of planning and implementation at the grassroots level, besides enabling and empowering individuals to articulate their needs.
- **SELF-RELIANCE:** The communities strive for self-reliance making use of their traditional wisdom and value their resources, including knowledge and skill and adopt a lifestyle molded on the local environment and based on eco-friendly and healthy principles sensitive to natural resources.
- **AUSTERITY:** Austerity in thought and action, as well as lack of barriers and levels that prevent direct interaction. **INCLUSIVE GROWTH:** The growth model must be inclusive with special emphasis on the vulnerable and underprivileged groups.

Area of Interventions

1

Local Development, Integration and Convergence building

- Localization of SDS
- Households Development Plan
- Integrated Village Development Plan Gram Panchayat Development Plan
- Networking and Convergence
- Capacity building of the community institutions
- Enterprise promotion and Market linkage

2

Sustainable Environment, Disaster Management and Climate Change

- Carbon Minus
- Natural Resources Management
- Disaster Risk Reduction

3

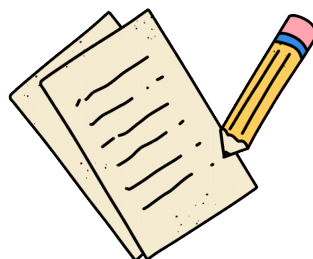
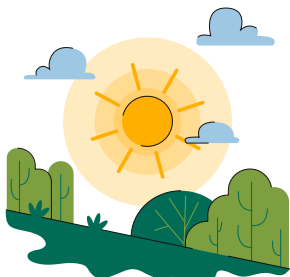
Preventative Health Care and Quality Primary Education

- Health, Hygiene Practices and Behavioural change
- Maternal, new-born, child and adolescent health
- Sexual and reproductive Early childhood education
- Primary and elementary education

Research, Knowledge Management and Learning

4

- Baseline Study
- Impact Assessment Study
- Edline Study
- Training Need Assessment
- Training Module & IEC Development
- Business Development Plan & Value Chain Analysis
- Documentation of Best practices and Dissemination



Highlights of the Year

Response to Covid-19

The past two years have been challenging for all and as we step into a new “post-COVID” world, brimming with hope and armed with the determination to mitigate and emerge stronger from the impact of the pandemic. FRC has evolved as a preferred partner with communities, local, devastated populations, particularly those from marginalized communities. FRC supported + 5000 Covid victims: Dry ration, Vaccinations, the provision of medical supplies, counselling, and nourishment was given special attention.

Response to Climate Change

In 2022, the United Nations General Assembly recognized that a clean, healthy and sustainable environment is a human right. The global environmental crisis caused by climate change, pollution, biodiversity and nature loss is disproportionately impacting the world’s most marginalized communities.

During this year FRC has distributed 2000 vegetable kits to the 2000 households in coastal districts like Khurda and Puri districts of Odisha as well as planted disaster resilient trees.

